

MONTHLY MEMBERSHIP PROGRESS REPORT

LOCATION INDIA

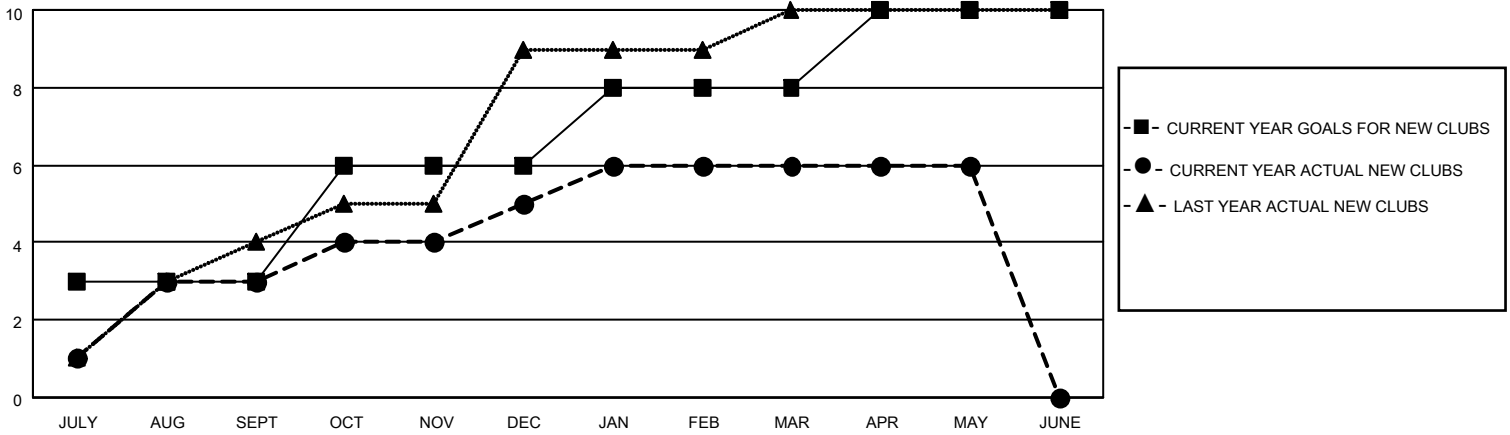
District 321C1

Results as of: 5/31/2022

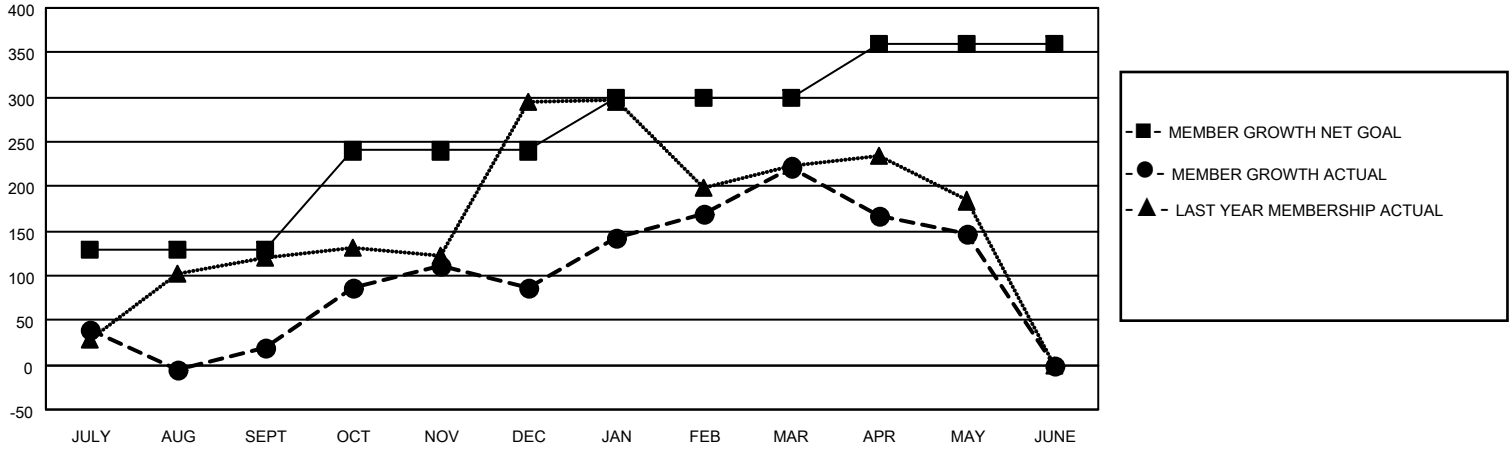
Clubs			
RESULTS FOR 2021-2022			
QUARTER	NEW CLUB GOAL	NEW CLUBS	DROPPED CLUBS
JULY/AUG/SEPT	3	3	14
OCT/NOV/DEC	3	2	6
JAN/FEB/MAR	2	1	3
APR/MAY/JUNE	2	0	2

Members			
RESULTS FOR 2021-2022			
QUARTER	MEMBER GROWTH NET GOAL	MEMBER GROWTH ACTUAL	DROPPED MEMBERS ACTUAL (including transfers)
JULY/AUG/SEPT	130	277	226
OCT/NOV/DEC	110	215	137
JAN/FEB/MAR	60	235	73
APR/MAY/JUNE	60	76	121

GOALS AND ACTUAL NEW CLUBS CUMULATIVE



GOALS AND ACTUAL MEMBERS CUMULATIVE



DROPPED CLUBS: 24

76 CLUBS OF 170 ADDED 1 OR MORE NEW MEMBERS

GENDER DISTRIBUTION

MALE	3,198 (69.27%)
FEMALE	1,415 (30.65%)
NON BINARY	0 (0.00%)
PREFER NOT TO ANSWER	4 (0.09%)

DROPPED MEMBERS

[CLICK HERE FOR CUMULATIVE MEMBERSHIP DATA](#)

DECEASED	18
CLUB CANCELLED	264
OTHER	275
TOTAL	557

TOTAL FAMILY UNIT MEMBERS 2,331

FAMILY MEMBERS PAYING HALF DUES 1,239